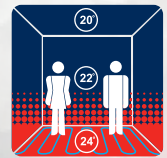


WATER UFH FLOOR PROFILE

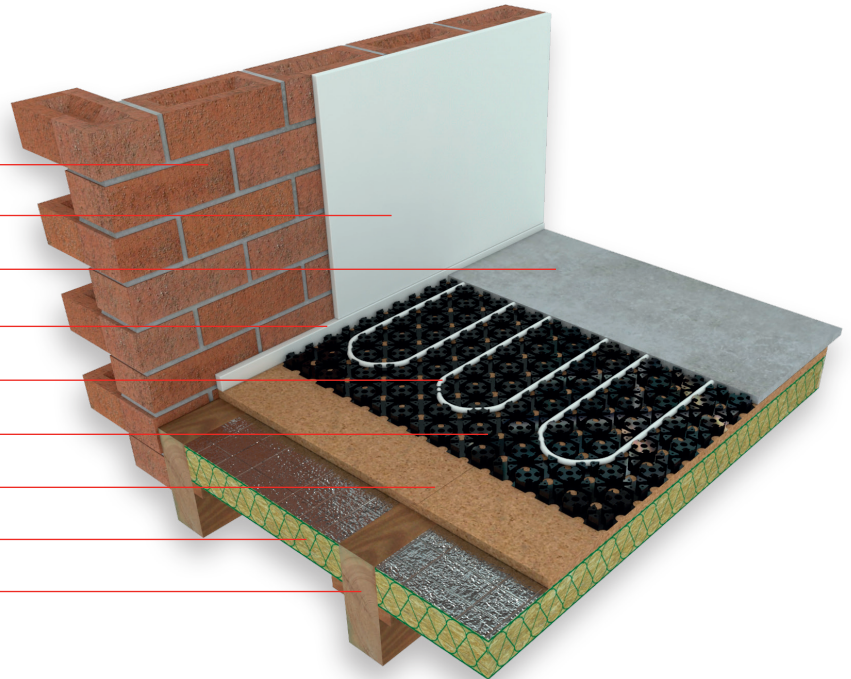
Minitec System on Joist Floor



GS UNDERFLOOR
HEATING

t: 01923 249026 m: 07941 169635 w: www.gs-ufh.co.uk e: gs@warmfloors.co.uk

1. Outside wall
2. Plasterboard
3. 15mm Latex screed on minitec system
4. Edge isolation material profile with sealing skirt
5. Underfloor heating pipe (9.9mm x 1.1mm)
6. Minitec mounting board
7. Existing timber floor
8. Existing insulation
9. Joists

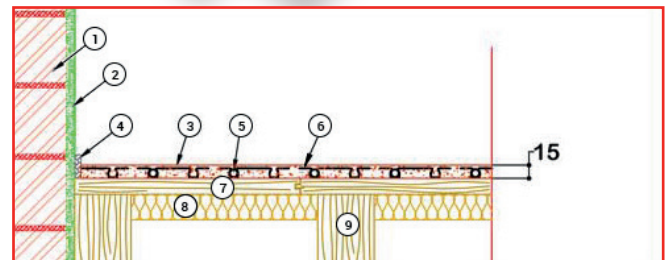


SYSTEM OVERVIEW

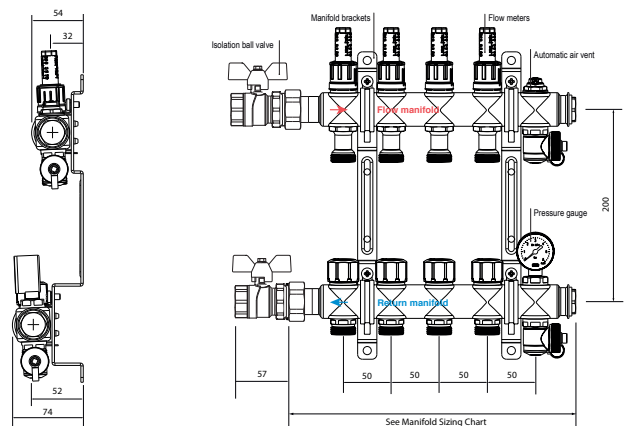
The minitec system now makes water based floor heating and cooling systems available to both new and old buildings without any compromise on design or performance.

The minitec system has a minimal structural height of only 15mm (system and screed) and is perfectly suited for refurbishment projects. Applied directly to the existing floors without significant increases to floor levels, the velta minitec system offers many installation opportunities to architects, property developers and builders. This innovative system provides:

- 15mm construction height
- Screed application
- 5KN/m² floor loading
- Very low thermal mass
- Very fast response time (60% of output in 20mins)
- Self adhesive minitec fixing panels for fast one man installation
- Minitec fixing panels protect the pipe and provide fast and secure pipe fixing



MANIFOLD DIMENSIONS



MANIFOLD SIZING CHART

Number of ports	2	3	4	5	6	7	8	9	10	11	12
Manifold Length (mm)	192	242	292	342	392	442	492	542	592	642	692

Recommended minimum installation clearances: 200mm between the finished floor level (FFL) and bottom of the manifold, 100mm above the manifold, 50mm to either side of the manifold and allow an extra 100mm for the supply pipe work.