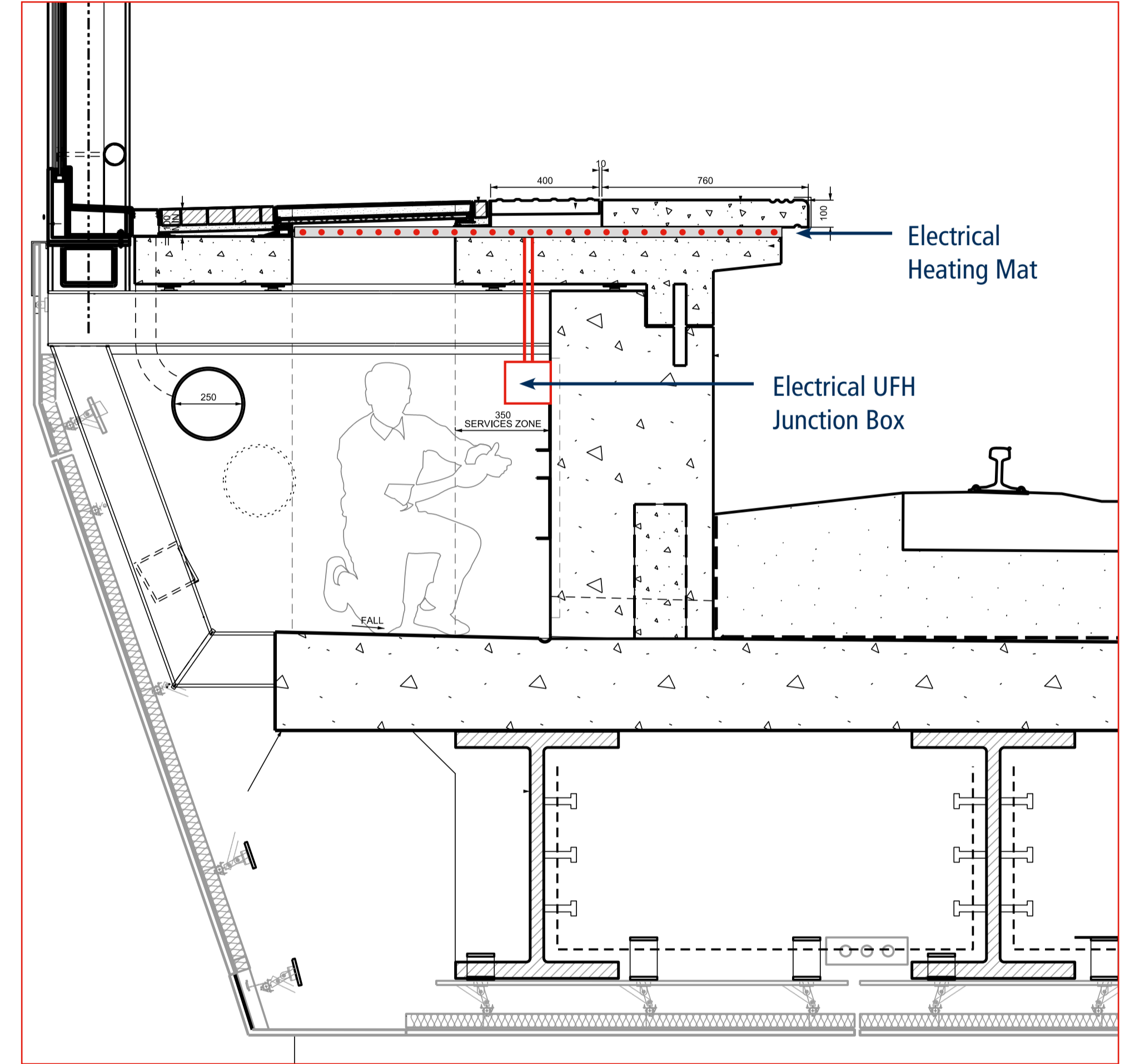
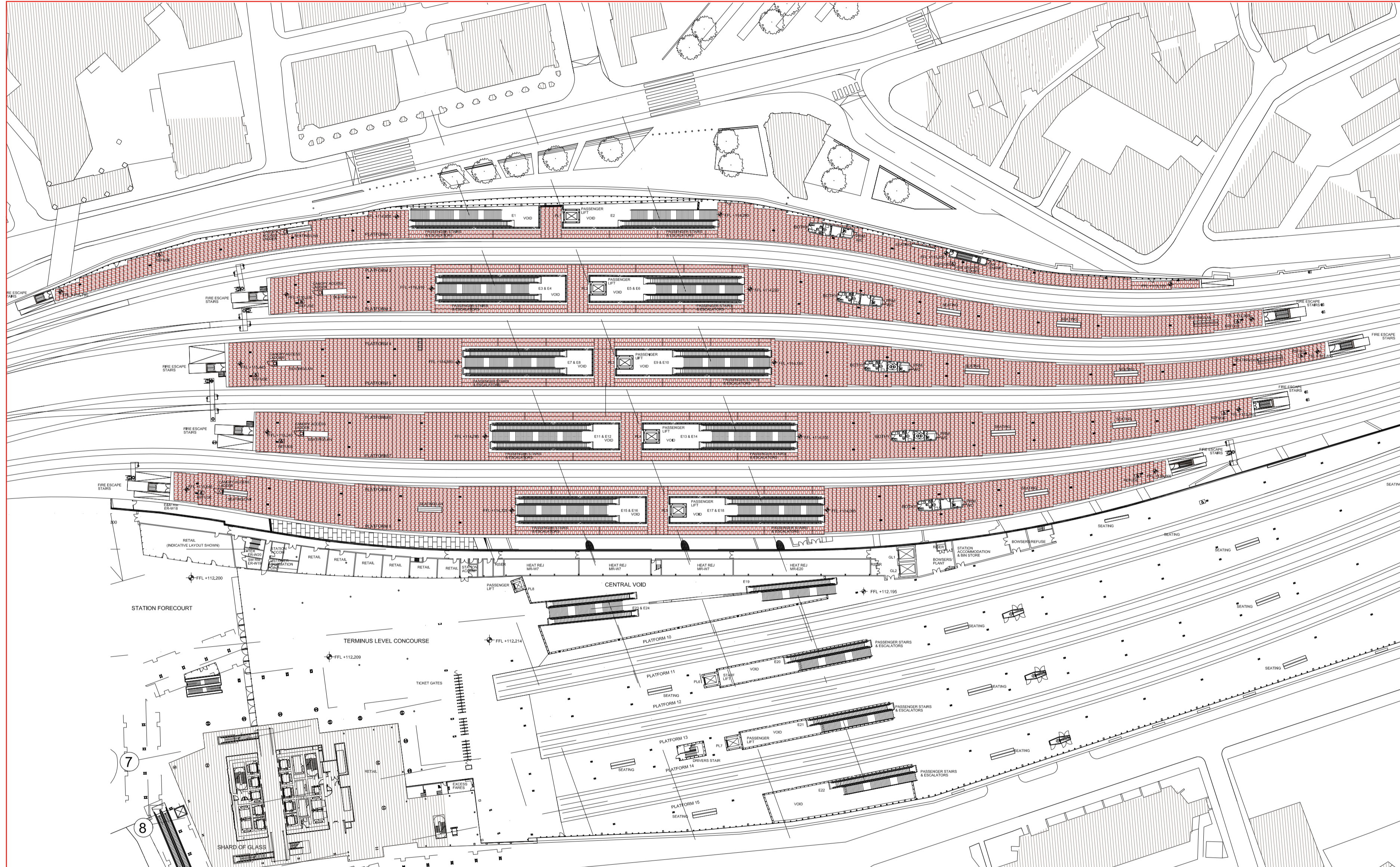
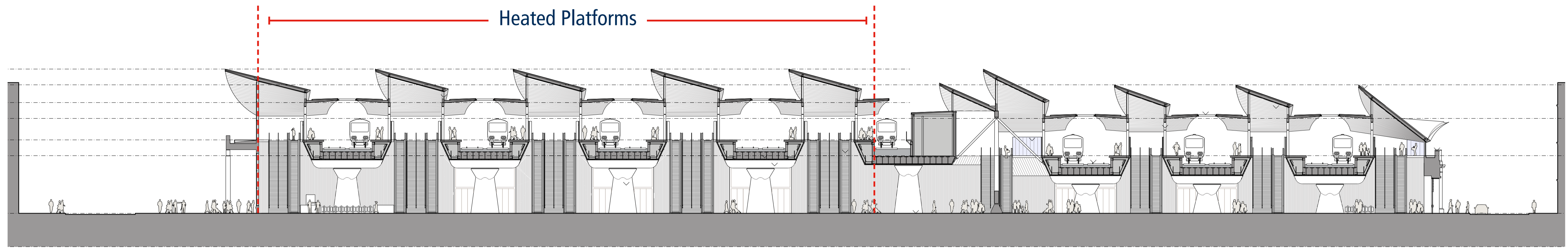


Heated Platforms



Twin Heating Element

30x Days Winter Season @ 275w psqm

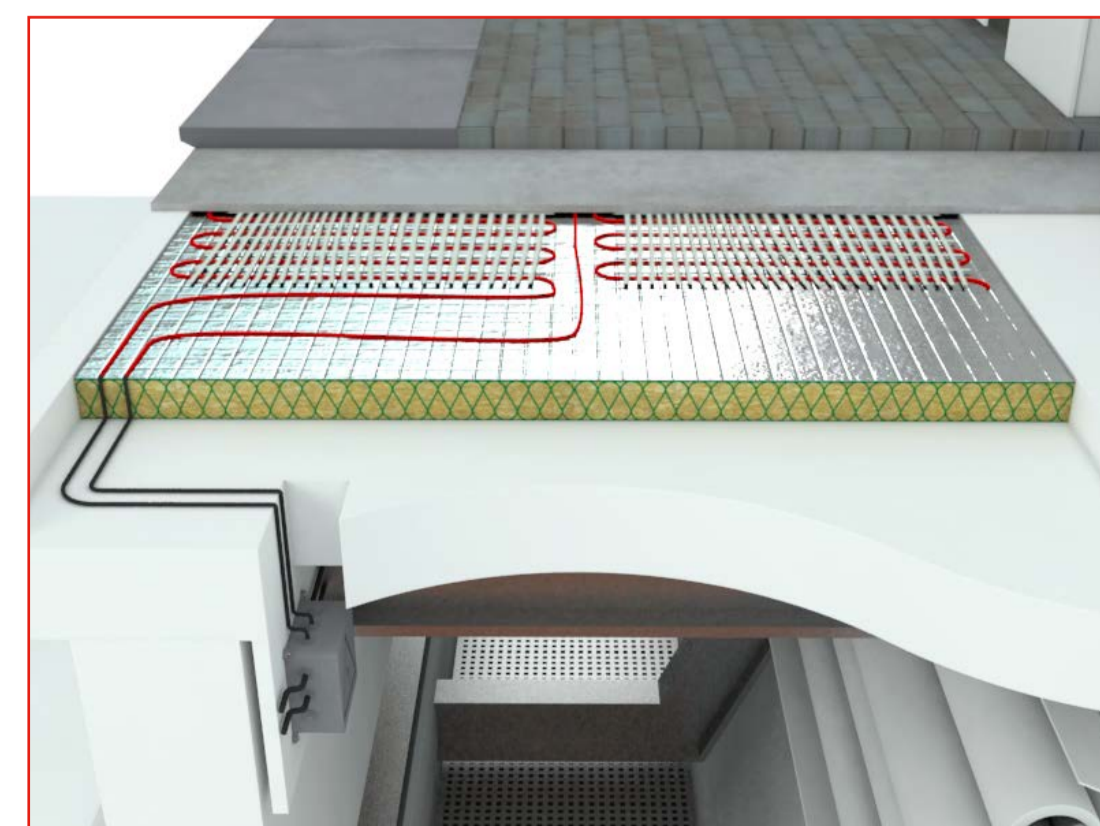
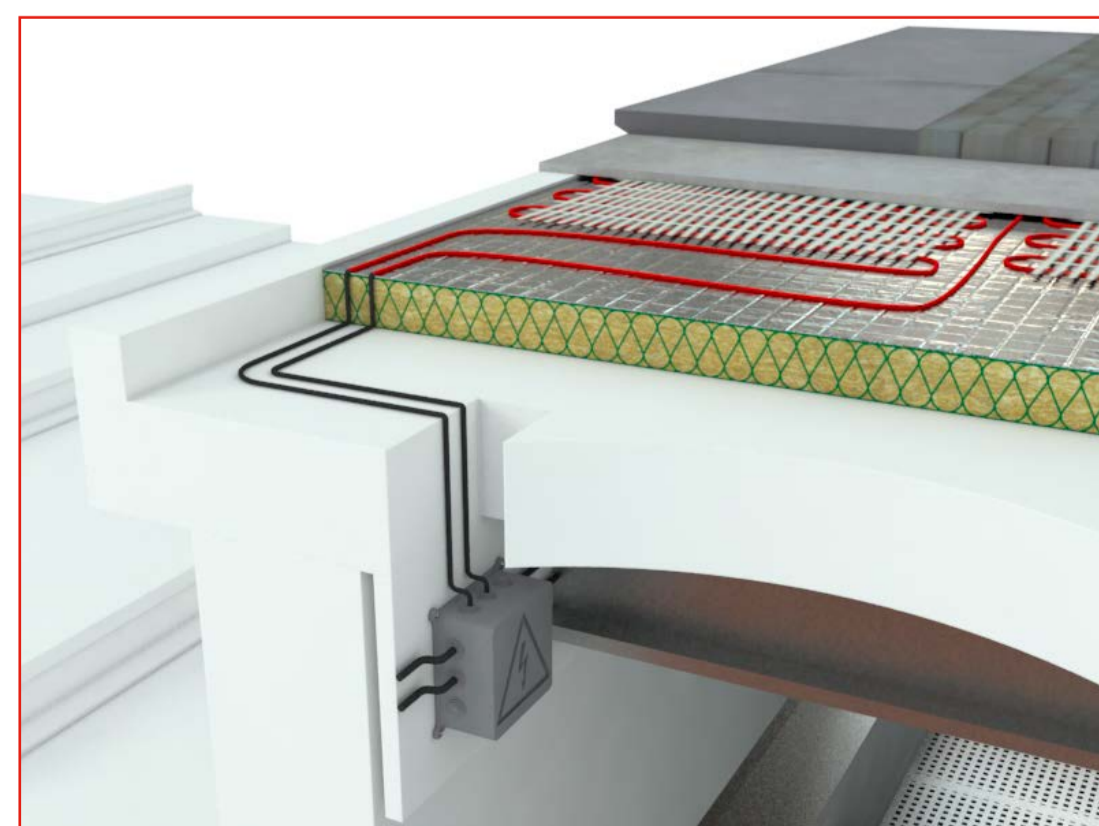
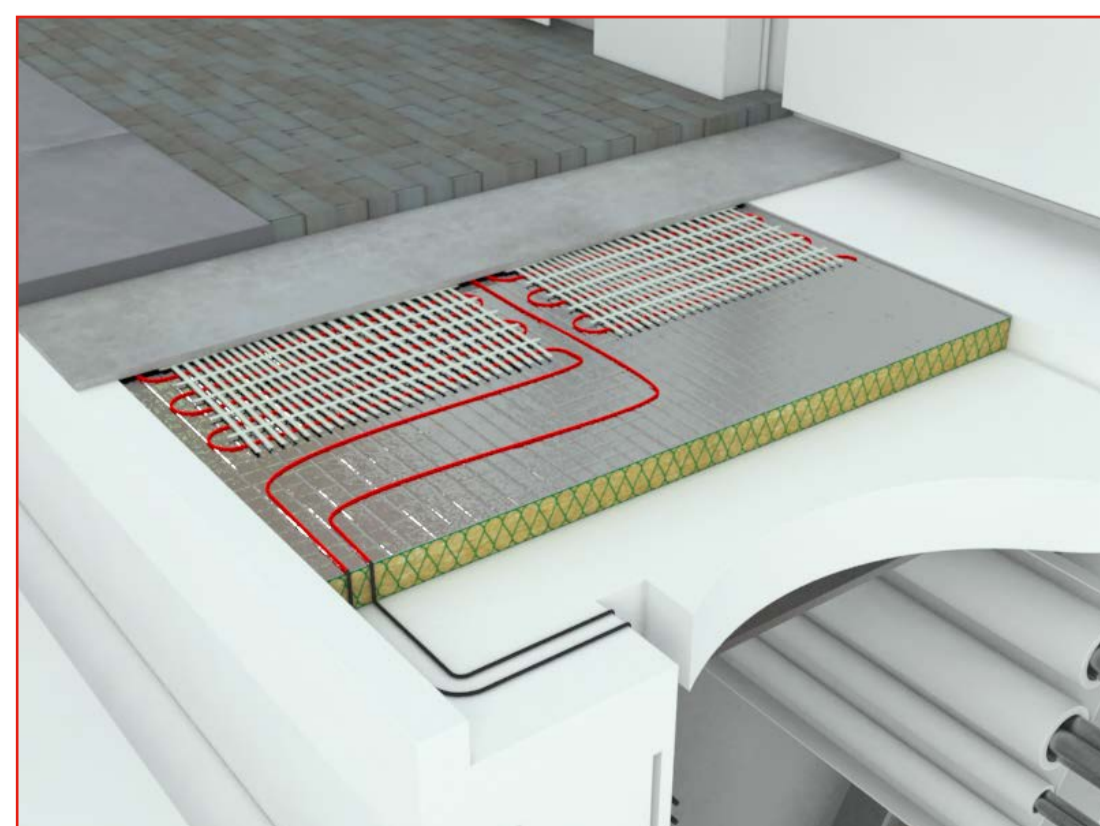
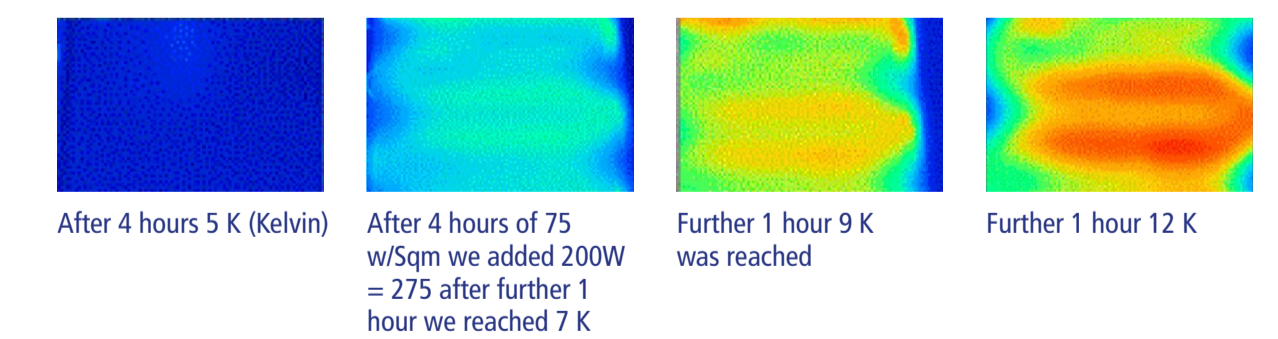
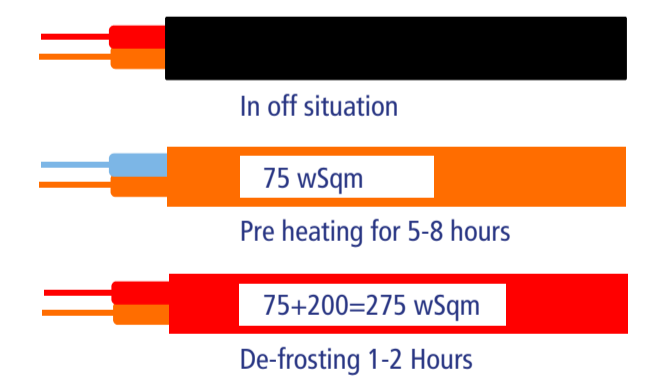
Sqm	13,000
Pre Heating 75w Sqm	0.075
Kwh	975
Hours per day Pre Heating	8
Total KW per day	7,800
Cost Kwh	£ 0.07
Cost per day	£ 546.00
Days per winter	30
Total Cost per Winter	£16,380.00

Sqm	13,000
Pre Heating 200w Sqm	0.2
Kwh	2,600
Hours per day Pre Heating	2
Total KW per day	5,200
Cost Kwh	£ 0.07
Cost per day	£ 364.00
Days per winter	30
Total Cost per Winter	£10,920.00

Cost per Winter Season	£27,300.00
------------------------	------------

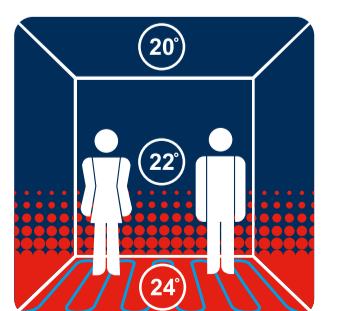
Technical details

- Construction as given
- 50 mil insulation is a **must**
- Lowest Temperature Zero
- Plc to Contol the system is very important
- Sensor needed
  - Surface humidity sensor
  - Air temperature sensor
  - Surface temperature sensor
  - Underneath the pave temperature sensor
  - Temperature sensor on the insulation



LONDON BRIDGE UFH - ELECTRICAL SYSTEM

GS UNDERFLOOR HEATING LTD. | 14 The Gateway - London - WD18 7HW  
 Email: gs@warmfloors.co.uk Telephone: 01923 249026 Mobile: 07941169635 www.gs-ufh.co.uk



GS UNDERFLOOR HEATING