

# Thimble Sensors and Button Sensors

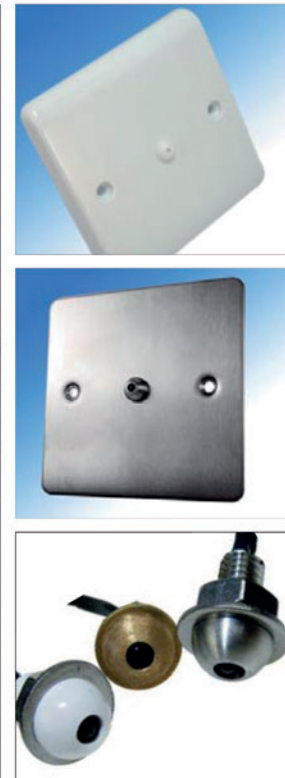


t: 01923 249026 m: 07941 169635 w: www.gs-ufh.co.uk e: gs@warmfloors.co.uk

## Thimble sensors in stainless steel, brass and white plastic



## Plate mounted button sensors



## PRODUCT OVERVIEW

The TE-B range of button temperature sensors is designed to interface with a wide variety of HVAC control equipment. Sensors are housed in a white plastic button or thimble shaped enclosure but brass, aluminium or stainless steel versions are also available.

Each sensor is designed to be mounted on a back mounting plate or simply drill a hole suitable for the correct sized thread, pass the cable through the hole, secure with the fixing nut provided and then terminate the cable as required. We recommend that sensors are installed by a qualified technician in conjunction with any guidelines for the equipment it is being connected to. As a general rule, screened cable should be used to connect the sensor to the controller. Please note that none of these sensors are suitable for use with mains voltage.

### Output types

|            |                                |
|------------|--------------------------------|
| Thermistor | Resistive                      |
| Active     | 4-20mA or 0-10Vdc (selectable) |

### Accuracy

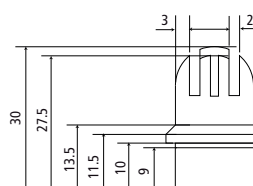
|            |                        |
|------------|------------------------|
| Thermistor | ±0.20C (00C to 700C)   |
| PT100a     | ±0.150C (00C to 1000C) |
| PT1000a    | ±0.150C (00C to 1000C) |
| NI1000     | ±0.300C (00C to 1000C) |

### Housing materials

|    |                         |
|----|-------------------------|
| AL | Aluminium thimble       |
| SS | Stainless steel         |
| B  | Brass thimble           |
| BW | Brilliant white thimble |

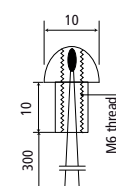
### Dimensions (millimetres)

Thimble sensor



### Dimensions (millimetres)

Button sensor



FLUSH MOUNT  
SENSOR NOW  
AVAILABLE

NEW